



WATER TREATMENT SYSTEMS CATALOG

**A Simplified Approach
to Better Water**



PENTAIR.COM

**Pentair delivers smart,
sustainable water solutions
that empower our customers
to make the most of life's
essential resource.**



TABLE OF CONTENTS

Introduction

Tapping Into the Water Treatment Market	4
Common Water Issues	5

Whole House Valve/Tank Systems

Water Softening Systems	7
Carbon Filtration Systems	8
Iron Reduction Systems	9
Acid Neutralizing Systems	10

Whole House Drop-in Cartridge Systems

FloPlus™ Filtration Systems	11
Heavy Duty Lead Filtration System	12

Drinking Water Systems

FreshPoint® Filtration Systems	15
FreshPoint Reverse Osmosis Systems	16
Undersink Lead Filtration System	17

Peace of Mind. FOR LIFE.	18
---------------------------------------	----

Why Partner with Pentair	19
---------------------------------------	----

TAPPING INTO THE WATER TREATMENT MARKET

Whether you currently sell and service water treatment solutions or are completely new to the category, Pentair is here to provide you with just the right products, services and support you need to be successful. Now more than ever, homeowners are looking for the peace of mind that comes with cleaner, higher-quality water.

This comprehensive, yet concise, assortment of Pentair products allows you to solve most common water problems with the fewest amount of skus - no complex components or excessive inventory - and that's just good business. Simplified technologies also means that you don't need to be a water scientist to recommend and install the right water treatment solutions for your customer.

COMMON WATER ISSUES



Sulfur - The "rotten-egg" odor often present in well water is caused by hydrogen sulfide gas. In addition to the unpleasant smell, hydrogen sulfide contributes to corrosion in plumbing fixtures.



Sediment - Sediment such as sand, silt, rust and mineral particles gives water a cloudy appearance and can cause significant wear on plumbing and household appliances.



Cysts - Because they are resistant to traditional disinfection agents like chlorine, harmful cysts such as *Giardia* and *Cryptosporidium* may not be totally removed by municipal water treatment.



Lead - Lead leaches into the water supply as the lead pipes used in older homes and water distribution systems corrode. Both tasteless and odorless, high levels of lead can cause developmental delays in children and elevated blood pressure in adults.



Iron - Excess iron can lead to corrosion and manifest as stained fixtures, discolored water and metallic tastes.



Acid - Overly acidic water tastes metallic or sour. It can stain laundry, sinks and drains, as well as damage plumbing and appliances.



Hard Minerals - In addition to spotty dishes and stiff laundry, high concentrations of dissolved minerals lead to damaging scale buildup on plumbing and water-using appliances.



Chlorine - While chlorine is important for killing water-borne bacteria, too much chlorine can give water an unpleasant taste, as well as irritate skin.

WATER TERMINOLOGY MADE EASY

Backwash Flow Rate - Flow rate needed for the filtration media to be properly cleaned and restored.

Exchange Capacity - The amount of hard minerals that a system can remove before it needs to regenerate. Measured in grains per pound of salt.

Filter Media - Anything in a filter that changes the quality of water flowing through it. Activated carbon, for example, effectively removes chlorine, sediment, volatile organic compounds (VOCs), and chlorine taste and odor.

Grains - Measure of hard minerals; 7,000 grains is the equivalent of 1 pound of rock.

GPM - Gallons per minute; measurement of the flow rate of water.

Hardness - Measurement of grains per gallon.

PPM - Parts per million; a measurement of the concentration of dissolved substances or contaminants in water.

Service Flow Rate - The rate at which water flows into the home.

Peak Flow Rate - The maximum rate at which water can be drawn from the system.

Drinking Water or Point of Use - Filtration and reverse osmosis systems address water at the tap.

Whole House or Point of Entry - Softening and filtration systems address water quality issues by treating water as it comes into the home, whether from a municipal source or well.



WHOLE HOUSE SYSTEMS

Pentair whole house systems treat water as it enters the home, and are easy to specify, install and service. Our proprietary rotary valve systems were created with simplicity in mind. With only one normal wear part, there are fewer replacement parts to keep in stock. User-friendly programming and diagnostics further add to their easy serviceability and maintenance. Systems with drop-in filter cartridges make it simple to switch out filters that are certified to reduce undesirable contaminants.



WHOLE HOUSE WATER SOFTENING SYSTEMS



The ion exchange process removes the calcium and magnesium ions that cause hard water. It also reduces scale buildup, soap film, water spots and iron stains. Soft water improves the effectiveness of detergents and extends the life of plumbing, appliances and other water treatment devices.

- Singular, rotary disc seal for longer life and lower maintenance
- Safety valve prevents brine tank overflow
- Self-cleaning brine injector reduces maintenance
- Highly efficient, chlorine-resistant resin for longer life
- Simple, electronic system for easy programming; maintains settings during power outages
- Automatic bypass for uninterrupted water flow to the home during regeneration
- Demand-initiated system regenerates when necessary, based on water usage, saving salt and water



Product Number	35920	35921	35922
Rated Service Flow (gpm)	11.6	11.9	13.2
Pressure Drop at Rated Service Flow (psi)	12	15	15
Rated Capacity (grains @ lbs of salt)	17,500 @ 3.9 lbs 25,200 @ 9.8 lbs 33,500 @ 15.6 lbs	24,300 @ 5.2 lbs 37,000 @ 14.3 lbs 48,600 @ 23.4 lbs	34,600 @ 7.5 lbs 50,400 @ 18.75 lbs 64,000 @ 30 lbs
Rated Efficiency (grains/lb salt @ lbs of salt)	4,487/lb @ 3.9 lbs	4,637/lb @ 5.2 lbs	4,613/lb @ 7.5 lbs
Gel Resin, Na Charged (cu ft)	1.0	1.5	2.0
Resin Tank Size (dia x h)	10" x 44"	10" x 54"	12" x 48"
Brine Tank Size (dia x h)	18" x 33"	18" x 33"	18" x 33"
Backwash (gpm)	2.5	2.5	3.5

Our proprietary rotary valve systems are simple to set up and their rotary design is built to last. Plus, electronic smart controls, and user-friendly programming and diagnostics, make them easy to service and maintain.

WHOLE HOUSE CARBON FILTRATION SYSTEMS



Activated carbon filters reduce unpleasant tastes and odors from chlorine or other organic substances without requiring cartridge change-outs. They also extend the life of plumbing, appliances and other water treatment devices.

- Simple, electronic system for easy programming; maintains settings during power outages
- Automatic bypass for uninterrupted water flow to the home
- Singular, rotary disc seal means longer life and lower maintenance
- Coconut shell-based carbon for highly effective chlorine reduction and long life
- 1.0, 1.5 and 2.0 cubic foot capacities available to meet household demand requirements

Product Number	35923	35924	35925
Rated Service Flow (gpm)	11.6	11.9	13.2
Pressure Drop at Rated Service Flow (psi)	12	15	15
Carbon Filtration Media (cu ft)	1.0	1.5	2.0
Resin Tank Size (dia x h)	10" x 44"	10" x 54"	12" x 48"



Our proprietary rotary valve systems are simple to set up and their rotary design is built to last. Plus, electronic smart controls, and user-friendly programming and diagnostics, make them easy to service and maintain.

WHOLE HOUSE IRON REDUCTION SYSTEMS



Greensand and potassium permanganate reduce iron, manganese and sulfur in order to eliminate "rotten egg" smells and dark stains on fixtures.

- Simple, electronic system for easy programming; maintains settings during power outages
- Automatic bypass for uninterrupted water flow to the home during regeneration
- Singular, rotary disc seal means longer life and lower maintenance
- Self-cleaning injector reduces maintenance
- Chemical-free operation minimizes operating costs
- 1.0 and 1.5 cubic foot capacities available to meet household demand requirements

Product Number	35928	35929
Rated Service Flow (gpm)	5.0	5.0
Pressure Drop at Rated Service Flow Rate (psi)	3	3
Filtration Media (cu ft)	1.0	1.5
Tank Size (dia x h)	10" x 44"	10" x 54"



WHOLE HOUSE ACID NEUTRALIZING SYSTEMS



Calcite raises the pH of the incoming water supply, reducing the acidity that corrodes plumbing and causes blue-green staining of fixtures. Balanced pH also helps extend the life of plumbing, appliances and other water treatment devices.

- Simple, electronic system for easy programming; maintains settings during power outages
- Automatic bypass for uninterrupted water flow to the home
- Singular, rotary water control disc seal means longer life and lower maintenance
- Port hole for ease of media replacement
- 1.0, and 1.5 cubic foot capacities available to meet household demand requirements

Product Number	35926	35927
Rated Service Flow (gpm)	6.0	7.0
Calcium Carbon Media (cu ft)	1.0	1.5
Tank Size (dia x h)	10" x 44"	10" x 54"

Our proprietary rotary valve systems are simple to set up and their rotary design is built to last. Plus, electronic smart controls, and user-friendly programming and diagnostics, make them easy to service and maintain.

ASSEMBLED IN THE
USA
OF FOREIGN & DOMESTIC PARTS



FLOPLUS HEAVY DUTY FILTRATION SYSTEMS



Heavy duty systems for maximum whole house cyst, chlorine and sediment reduction. High flow makes it ideal for low water pressure situations.

- Chlorine and bad taste & odor reduction
- NSF/ANSI Standard 53 certified to reduce cysts such as *Cryptosporidium* and *Giardia* by mechanical means
- Maximum filtration with minimal pressure drop
- Integrated drain for easier cartridge change-outs
- System comes complete with cartridge, wrench, and mounting bracket kit
- Available in two sizes to meet inlet/outlet and gpm requirements

Product Number	152094	152095
Rated Service Flow (gpm)	10.0	25.0
Substance Reductions Claims	Chlorine Taste & Odor, Sediment, NSF/ANSI Standard 53 certified to reduce cysts such as <i>Cryptosporidium</i> and <i>Giardia</i> by mechanical means	
Dimensions (h x dia)	13.16" x 7.25"	23.86" x 7.25"
Filter Life	25,000 gallons @ 2gpm	50,000 gallons @ 4gpm
Replacement Cartridge	455906-43	455905-43
Certifications	NSF/ANSI Standard 53	

Perfect for homes with a water source where cysts and sediment are a concern, our FloPlus Filtration Systems features a drop-in cartridge that is certified to reduce undesirable contaminants.



System tested & certified by NSF International against NSF/ANSI Standard 53 for the reduction of claims specified on the Performance Data Sheet and at www.nsf.org.

EPA Est. No. 090375-MEX-001



HEAVY DUTY LEAD FILTRATION SYSTEM



A professional-grade lead reduction system for the entire home.

- Lead and chlorine taste & odor reduction
- NSF/ANSI Standard 53 certified to reduce cysts such as *Cryptosporidium* and *Giardia* by mechanical means
- Maximum filtration with minimal pressure drop
- Integrated bypass valve for easier cartridge change-outs
- Complete system with cartridge, wrench, mounting bracket kit and manual

Product Number	160410
Rated Service Flow (gpm)	10.0
Substance Reductions Claims	Lead, NSF/ANSI Standard 53 certified to reduce cysts such as <i>Cryptosporidium</i> and <i>Giardia</i> by mechanical means
Dimensions (h x dia)	27.2" x 7.0"
Filter Life	4-5 months
Replacement Cartridge	655210-43 (6/case)
Certifications	NSF/ANSI Standard 53

Perfect for homes with a water source where lead or cysts are a concern, our Heavy Duty Lead Filtration System features a drop-in cartridge that is certified to reduce undesirable contaminants.



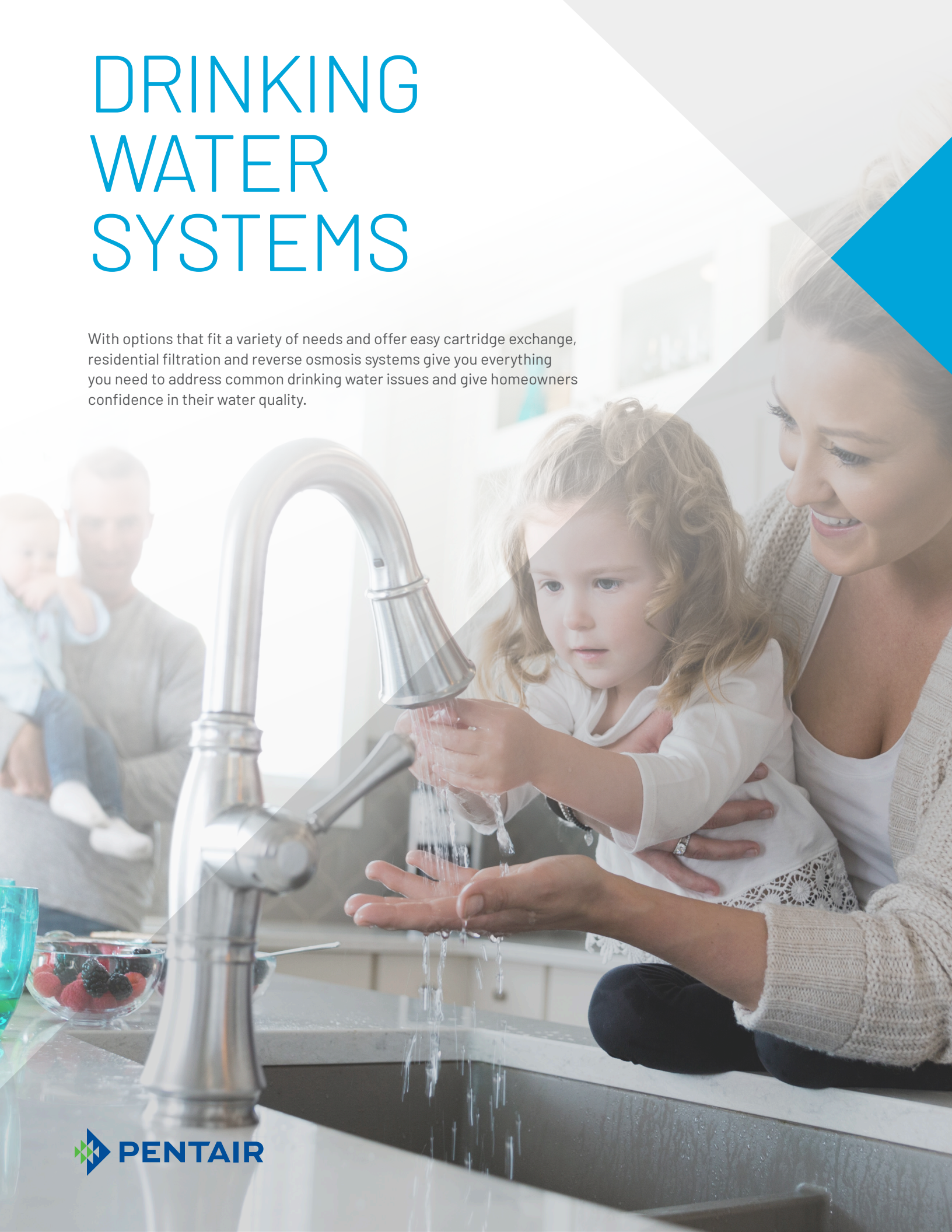
System tested & certified by NSF International against NSF/ANSI Standard 53 for the reduction of claims specified on the Performance Data Sheet and at www.nsf.org.

EPA Est. No. 090375-MEX-001



DRINKING WATER SYSTEMS

With options that fit a variety of needs and offer easy cartridge exchange, residential filtration and reverse osmosis systems give you everything you need to address common drinking water issues and give homeowners confidence in their water quality.



FRESHPOINT® DRINKING WATER SYSTEMS



FreshPoint carbon filtration targets contaminants such as lead, chlorine and sediment at the sink. Unique “click and enjoy” design simplifies cartridge exchange .

- Provides safer, more delicious water for cooking and drinking
- 3/8” push fittings for easy installation
- Effortless click-in cartridge change-outs
- Color coded cartridges maintain proper filter sequence
- Built-in check valve system means no need to turn off water for cartridge change-outs
- Retains minerals and vitamins naturally found in water
- Systems come complete with cartridge(s), installation kit, wrench and side faucet

Part / Model Number	158838 / F1000-B1B	158853* / F2000-B2M	158854* / F3000-B2M
Filtration Stages	Single Stage	2-Stage	3-Stage
Substance Reductions Claims	Atrazine, Chlorine Taste & Odor, Lead, Lindane, Sediment,	Atrazine, Chlorine Taste & Odor, Lead, Lindane, Sediment, VOCs	Atrazine, Chlorine Taste & Odor, Lead, Lindane, Sediment, VOCs
	NSF/ANSI Standard 42 & 53 certified to reduce cysts such as <i>Cryptosporidium</i> and <i>Giardia</i> by mechanical means.		
Dimensions (h x w x d)	12.25" x 3.5" x 4.8"	12.5" x 8" x 5.25"	12.5" x 11.25" x 5.25"
Filter Life	12 months		
Replacement Cartridges	655120-96	655126-96 Twin Pack	655116-96 655126-96 Twin Pack
Certifications	NSF/ANSI Standards 42 and 53		
Separate Faucet Required	Yes (Included)		

* Remote cartridge timer provides visual filter replacement notification



System tested & certified by NSF International against NSF/ANSI Standards 42 & 53 for the reduction of claims specified on the Performance Data Sheet and at www.nsf.org.

EPA Est. No. 082989-CHN-001



FRESHPOINT REVERSE OSMOSIS SYSTEMS



FreshPoint high efficiency reverse osmosis (RO) systems reduce a broad range of contaminants, including lead, cysts and sediment. Unique “click and enjoy” design simplifies cartridge exchange and color-coded cartridges help maintain proper filter sequence.

- Reduces more than 90% of all contaminants found in water
- Delivers high quality water that allows you to truly taste the flavor of beverages
- Color coded cartridges maintain proper filter sequence
- 3/8” push fittings for easy installation
- Effortless click-in cartridge change-outs
- High efficiency membrane technology

Part / Model Number	161110 / GRO-350B	161114 / GRO-475BP	161151 / GRO-475M	161152 / GRO-575M
Filtration Stages	3-Stage	4-Stage w/Pump*	4-Stage	5-Stage
Substance Reductions Claims	Arsenic, Barium, Cadmium, Chlorine Taste & Odor, Chromium, Fluoride, Lead, Radium, Selenium, TDS, Turbidity	Arsenic, Atrazine, Barium, Cadmium, Chlorine Taste & Odor, Chromium, Fluoride, Lead, Lindane, Radium, Sediment, Selenium, TDS, Turbidity	Arsenic, Atrazine, Barium, Cadmium, Chlorine Taste & Odor, Chromium, Fluoride, Lead, Lindane, Radium, Sediment, Selenium, TDS, Turbidity	Arsenic, Atrazine, Barium, Cadmium, Chlorine Taste & Odor, Chromium, Fluoride, Lead, Lindane, Radium, Sediment, Selenium, TDS, Turbidity, VOCs
	NSF/ANSI Standard 42, 53 & 58 certified to reduce cysts such as <i>Cryptosporidium</i> and <i>Giardia</i> by mechanical means.			
Dimensions (h x w x d)	12.54" x 11.31" x 5.46"	12.54" x 17.82" x 5.46"	12.54" x 17.82" x 5.46"	12.54" x 17.82" x 5.46"
Replacement Cartridges	655117-96 655121-96 655123-96	655117-96 655120-96 655122-96 655123-96	655117-96 655120-96 655122-96 655123-96	655117-96 655122-96 655123-96 655126-96 Twin Pack
Certifications	NSF/ANSI Standard 42 and 58	NSF/ANSI Standards 42, 53 and 58		
Separate Faucet Required	Yes (Included)			

*Integrated booster pump for low pressure applications increases production



System tested & certified by NSF International against NSF/ANSI Standards 42, 53 & 58 for the reduction of claims specified on the Performance Data Sheet and at www.nsf.org.

EPA Est. No. 082989-CHN-001



UNDERSINK LEAD FILTRATION SYSTEM



Professional grade lead reduction drinking water system, straight from your existing faucet.

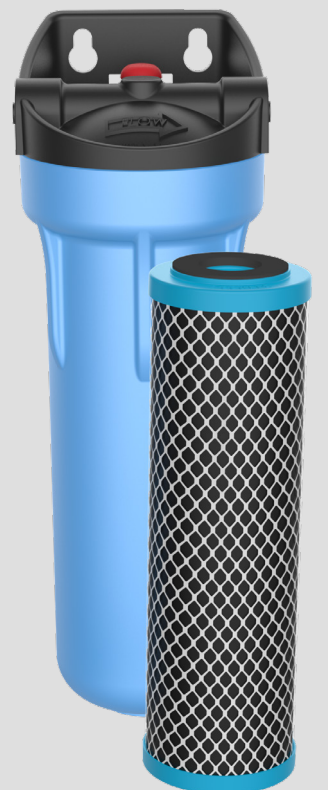
- Lead and chlorine taste & odor reduction
- NSF/ANSI Standard 53 certified to reduce cysts such as *Cryptosporidium* and *Giardia* by mechanical means
- Full flow technology means no separate faucet required
- System comes complete with wrench, integrated mounting bracket, and manual

Product Number	160406
Substance Reductions Claims	Lead, Chlorine Taste & Odor, NSF/ANSI Standard 53 certified to reduce cysts such as <i>Cryptosporidium</i> and <i>Giardia</i> by mechanical means
Dimensions (h x w)	14.12" x 5.25"
Filter Life	1 year / 1,500 gallons
Replacement Cartridge	655208-43
Certifications	NSF/ANSI Standard 53
Separate Faucet Required	No



System tested & certified by NSF International against NSF/ANSI Standard 53 for the reduction of claims specified on the Performance Data Sheet and at www.nsf.org.

EPA Est. No. 082989-CHN-001



PEACE OF MIND. **FOR LIFE.**

WATER TOUCHES NEARLY EVERYTHING WE DO.

At Pentair, we believe the health of our world depends on reliable access to clean water.

With a history of more than 50 years in water filtration, Pentair is a trusted provider of drinking water systems and appliances for savvy consumers desiring cleaner, better-tasting water, offering eco-conscious alternatives to bottled water.

Our responsibility is to deliver smart, sustainable water solutions – for life. From approximately 130 locations in 34 countries, Pentair’s 9,500 employees are united in our unwavering belief in the critical importance of clean water.



WHY PARTNER WITH PENTAIR?

We do the research and create the right solutions for your business and your customers. As your single-source supplier for residential water softening, filtration and reverse osmosis, we are continually improving our systems so they are easy to specify and install, and simple to use.

Pentair offers a comprehensive portfolio of residential water treatment solutions designed with professionals in mind. Together our integrated systems, technical training and marketing support make it easy for you to access the growing residential water treatment market.

VISIT [PENTAIR.COM /WHOLESALESYSTEMS](https://www.pentair.com/wholesalesystems) FOR MORE INFORMATION ON PENTAIR WATER TREATMENT SYSTEMS PRODUCTS AND SUPPORT.





13845 Bishops Dr. | Suite 200 | Brookfield, WI 53005 | United States
P: 262.238.4400 | Customer Service: 800.279.9404 | tech-support@pentair.com | pentair.com

All indicated Pentair trademarks and logos are property of Pentair. Third party registered and unregistered trademarks and logos are the property of their respective owners.

© 2020 Pentair. All rights reserved.

4005457 REV A JE20